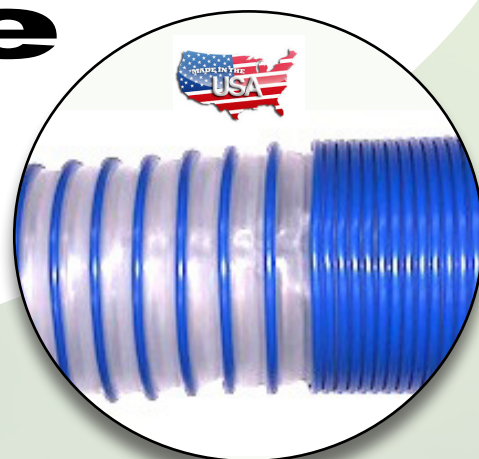
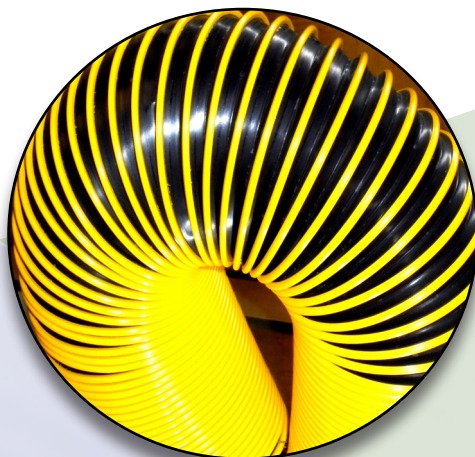


# PE X-Treme



**PE X-Treme** is an Amflex patented (U.S. patent No. 8,544,504 B2 - Foreign patent pending) all-plastic hose, manufactured from a copolymer blend. The PE X-Treme hose has an extendable 4:1 ratio, extremely flexible, light weight, corrosion and abrasive resistant and crush proof. The high degree of flexibility makes this hose very versatile as it can be routed in virtually any direction without collapsing. This space saving hose can be conveniently stored in a quarter of the space than a conventional hose and handled much friendlier than the wire reinforced type. These hoses come standard with plain cut (X) ends, and bulk packed.

## **\*\*\* Special Features \*\*\***

- \* **4:1 ratio**
- \* **Automatic retraction when suction end is sealed**
- \* **Space saver and flexibility**
- \* **Light weight and crush proof**
- \* **UV protection and abrasion resistant**
- \* **Abrasion resistant and minimum flex stress**
- \* **Produced from a proprietary polyolefin copolymer formulation using the highest quality material and state-of-the-art automation blending process that ensures product consistency**
- \* **Custom colors and lengths available upon request**

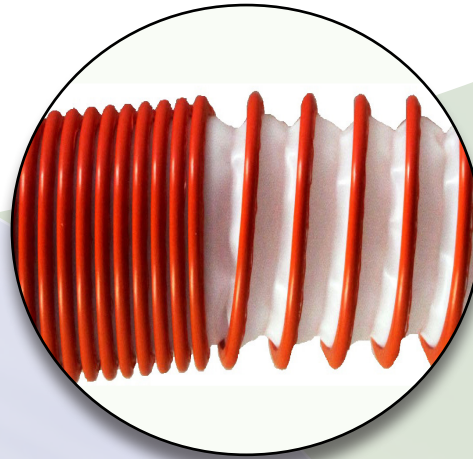
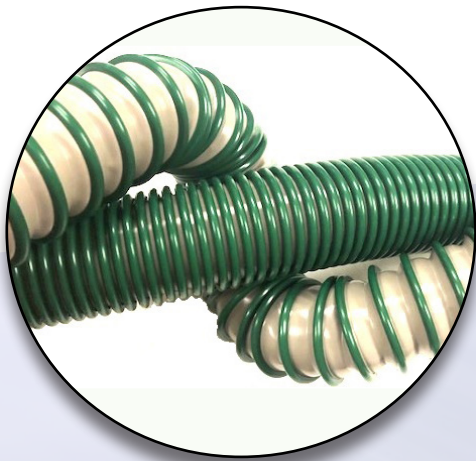


Standard Colors:  
**Black/Clear (CL) &  
 Black/Black (BK)**

Standard Packaging:  
 All hoses are bulk packed in gaylords  
 (qty varies depending on gaylord availability)

Part Number	Description / TECHS & SPECS
<b>4XT200X-LGTH-Color Code</b> Black/Clear (CL) & Black/Black (BK)  <i>(Please use full Part Numbers when placing an order)</i>	<b>2" PE X-Treme Vac Hose</b> Weight / Ft ..... <b>0.36 lbs contracted</b> Temp Range ..... <b>-40° to 160° F</b> Center Line Bend Radius ..... <b>3"</b>
<b>4XT250X-LGTH-Color Code</b> Black/Clear (CL) & Black/Black (BK)  <i>(Please use full Part Numbers when placing an order)</i>	<b>2 1/2" PE X-Treme Vac Hose</b> Weight / Ft ..... <b>0.45 lbs contracted</b> Temp Range ..... <b>-40° to 160° F</b> Center Line Bend Radius ..... <b>4"</b>
<b>4XT300X-LGTH-Color Code</b> Black/Clear (CL) & Black/Black (BK)  <i>(Please use full Part Numbers when placing an order)</i>	<b>3" PE X-Treme Vac Hose</b> Weight / Ft ..... <b>0.562 lbs contracted</b> Temp Range ..... <b>-40° to 160° F</b> Center Line Bend Radius ..... <b>5"</b>
<b>4XT400X-LGTH-Color Code</b> Black/Clear (CL) & Black/Black (BK)  <i>(Please use full Part Numbers when placing an order)</i>	<b>4" PE X-Treme Vac Hose</b> Weight / Ft ..... <b>0.76 lbs contracted</b> Temp Range ..... <b>-40° to 160° F</b> Center Line Bend Radius ..... <b>7"</b>
<b>4XT500X-LGTH-Color Code</b> Black/Clear (CL) & Black/Black (BK)  <i>(Please use full Part Numbers when placing an order)</i>	<b>5" PE X-Treme Vac Hose</b> Weight / Ft ..... <b>0.92 lbs contracted</b> Temp Range ..... <b>-40° to 160° F</b> Center Line Bend Radius ..... <b>9"</b>

# PE Stay-Put



**Stay-Put** is a patented (U.S. patent No. 8,544,504 B2 - Foreign patent pending) all-plastic extendable hose that manually retracts once extended to one fourth its (extended) length. Because it has the ability to keep its shape in any desired position this hose has unlimited use, specially where space is limited. This hose is used for drain, fume extraction and for dust collection. These hoses come standard with plain cut (X) ends, and bulk packed.

## **\*\*\* Special Features \*\*\***

- \* **4:1 ratio**
- \* **Retains user's desired shape**
- \* **Space saver and flexibility**
- \* **Light weight and crush proof**
- \* **Puncture resistant**
- \* **Abrasion resistant and minimum flex stress**
- \* **Produced from a proprietary polyolefin copolymer formulation using the highest quality material and state-of-the-art automation blending process that ensures product consistency**
- \* **Custom colors and lengths available upon request**

Standard Colors:  
**Black/Clear (CL) &**  
**Black/Black (BK)**



Standard Packaging:

All hoses are bulk packed in gaylords  
*(qty varies depending on gaylord availability)*

Part Number	Description / TECHS & SPECS
<p><b>4SP150X-LGTH-Color Code</b>            Black/Clear (CL) &amp; Black/Black (BK)   <i>(Please use full Part Numbers when placing an order)</i></p>	<p><b>1 1/2" PE Stay-Put Vac Hose</b>            Weight / Ft ..... <b>0.31 lbs</b> <i>contracted</i>            Temp Range ..... <b>-40° to 160° F</b>            Center Line Bend Radius ..... <b>2"</b></p>
<p><b>4SP200X-LGTH-Color Code</b>            Black/Clear (CL) &amp; Black/Black (BK)   <i>(Please use full Part Numbers when placing an order)</i></p>	<p><b>2" PE Stay-Put Vac Hose</b>            Weight / Ft ..... <b>0.36 lbs</b> <i>contracted</i>            Temp Range ..... <b>-40° to 160° F</b>            Center Line Bend Radius ..... <b>3"</b></p>
<p><b>4SP250X-LGTH-Color Code</b>            Black/Clear (CL) &amp; Black/Black (BK)   <i>(Please use full Part Numbers when placing an order)</i></p>	<p><b>2 1/2" PE Stay-Put Vac Hose</b>            Weight / Ft ..... <b>0.45 lbs</b> <i>contracted</i>            Temp Range ..... <b>-40° to 160° F</b>            Center Line Bend Radius ..... <b>4"</b></p>
<p><b>4SP300X-LGTH-Color Code</b>            Black/Clear (CL) &amp; Black/Black (BK)   <i>(Please use full Part Numbers when placing an order)</i></p>	<p><b>3" PE Stay-Put Vac Hose</b>            Weight / Ft ..... <b>0.56 lbs</b> <i>contracted</i>            Temp Range ..... <b>-40° to 160° F</b>            Center Line Bend Radius ..... <b>5"</b></p>
<p><b>4SP400X-LGTH-Color Code</b>            Black/Clear (CL) &amp; Black/Black (BK)   <i>(Please use full Part Numbers when placing an order)</i></p>	<p><b>4" PE Stay-Put Vac Hose</b>            Weight / Ft ..... <b>0.76 lbs</b> <i>contracted</i>            Temp Range ..... <b>-40° to 160° F</b>            Center Line Bend Radius ..... <b>7"</b></p>

# VacXtension



(CONNECT, EXPAND, CLEAN, RETRACT)



**VacXtension** is a patented (U.S. patent No. 8,910,667 B2 - Foreign patent pending) all-plastic high reach hose in the vacuum industry designed to assist in the cleaning of out of reach areas for homes or commercial buildings. This light weight, extendable to a rate of 3:1 ratio, has a non-spring action. It is tough and will store easily in the most restricted corners. Because of the low stress in its contracted position, it makes a great choice when selecting hoses for robotic arms, assembly equipment, and any other equipment that requires a hose for constant movement.

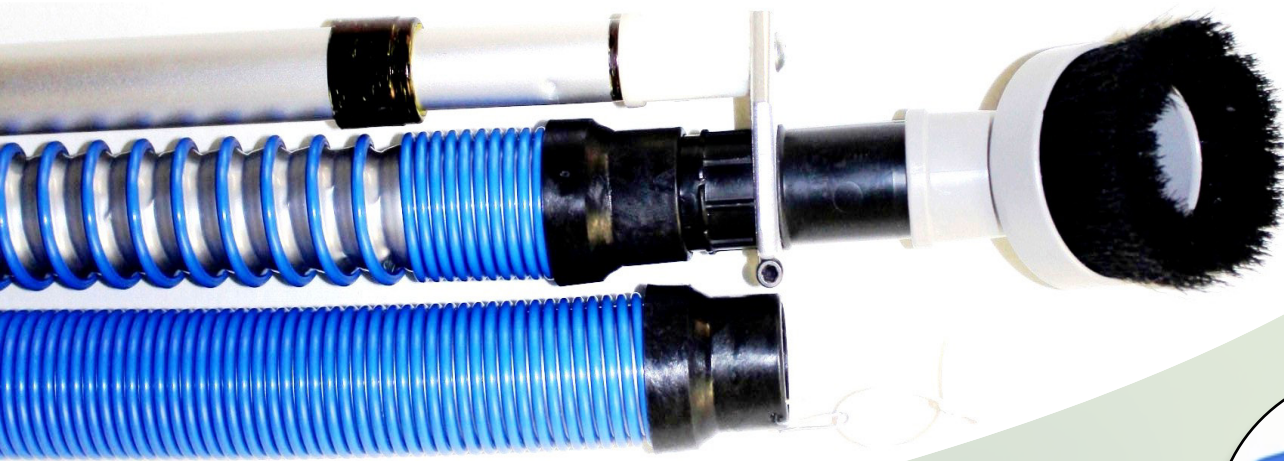
When using the VacXtension with your household vacuum it will reach up to 15 feet, with the option of an additional 9 feet of the super light-weight expandable hose that compresses down to 3 feet for easy storage. This new invention is comparable to the discovery of Carbon Fiber used in the Space Shuttle wall structure, super light-weight and resistant to abuse. The VacXtension creates an out-of-reach solution for maximum clean home environment and its retracting features allows for minimum space needed.

### Typical cleaning solutions created by the VacXtension are:

Dust removal from cathedral ceilings and windows, top of ceiling fan blades, cobwebs from inside and outside your home, picture frames, top shelves, air vents, curtains and blinds top, behind the refrigerator, couches, computer desks, entertainment centers, down along baseboards and all garage corners.

### **\* \* \* Special Features \* \* \***

- \* **3:1 ratio**
- \* **Automatic retraction**
- \* **Space saver and flexibility**
- \* **Retains user's desired shape**
- \* **Crush proof and puncture resistant**
- \* **Produced from a proprietary polyolefin copolymer formulation using the highest quality material and state-of-the-art automation blending process that ensures product consistency**



## Included Attachment



Part Number	Description / TECHS & SPECS
<p data-bbox="140 896 548 935"><b>4VX125E-LGTH-BLSV</b></p> <p data-bbox="112 983 579 1041"><i>(Please use full Part Numbers when placing an order)</i></p> <p data-bbox="100 1073 591 1138"><b>U.S. Patent No. 8,910,667 B2</b> <b>(Foreign patent pending)</b></p>	<p data-bbox="832 883 1306 972"><b>1 1/4" VacXtension Hose</b> <b>(Packed as individual Kits)</b></p> <p data-bbox="662 1000 1500 1037">Weight / Ft ..... <b>0.26 lbs</b> <i>contracted</i></p> <p data-bbox="662 1037 1466 1073">Temp Range ..... <b>-40° to 160° F</b></p> <p data-bbox="662 1073 1278 1110">Center Line Bend Radius ..... <b>2"</b></p>

Standard Colors: **Blue/Silver (BLSV)**

Standard Packaging: each VacXtension Kit comes individually packed *(Accessories also sold separately)*



<https://www.youtube.com/watch?v=834ZvIDefMs>

## Non-Included Attachments

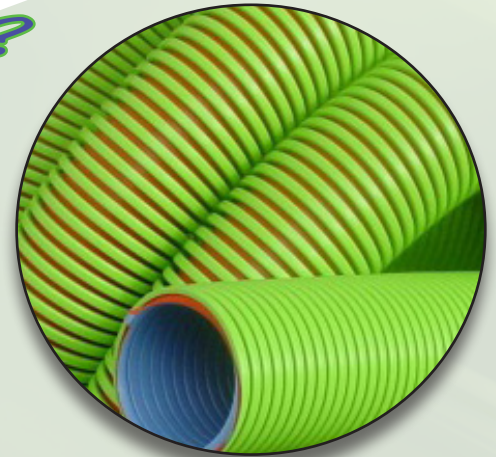
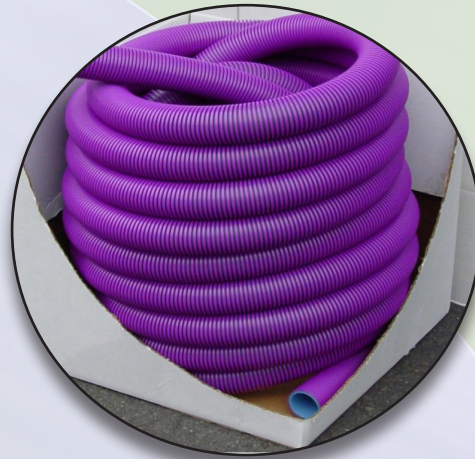
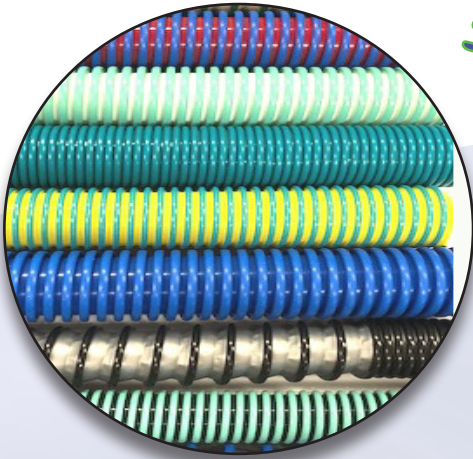
(These accessories usually come standard with household vacuum cleaners, and can be used with the VacXtension to enhance your cleaning experience!)



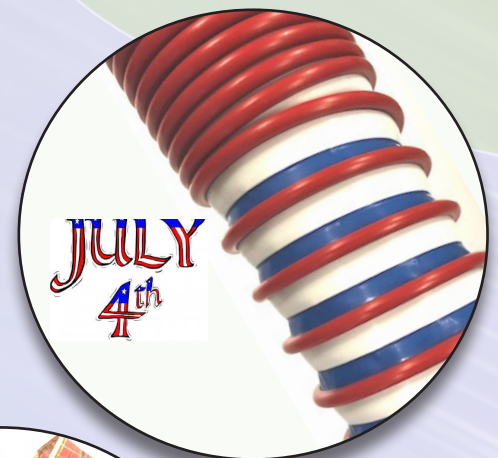
# Customize...

(Cuffs, Length, Color, Conductivity, Flexibility, Industry, Application, and much more...

## *Special Color?*



## *Holiday or Event?*



## Custom Accessories?



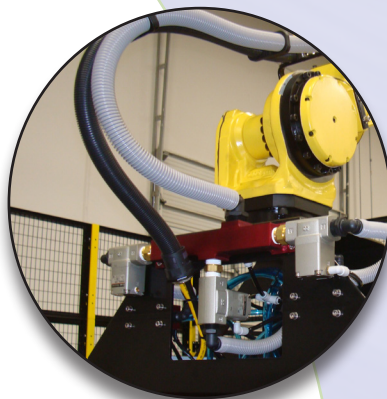
## Conductivity?

Amflex hoses can be customized and manufactured with special conductive material, or anti-static additives. For Static Conductive hoses, the webbin will contain carbon fiber for surface resistive of  $10^6$  ohms/ sq. that quickly diverts static electricity. The effectiveness in draining a static charge is classified by their surface resistivity range expressed in ohms. The faster the drainage of the static charge, the lower the surface resistivity. A fast draining static charge hose is in the range of  $10^3 - 10^6$  ohms. A low draining static charge hose is in the range of  $10^9 - 10^{11}$  ohms.

**For additional information please see the "Hose Related Properties"**

## Unique Application?

<i>Pump-out Sewer Stations</i>	<i>Airplane Maintenance</i>	<i>Car &amp; Window Drying</i>	<i>Port-a-Potty Cleaning</i>
<i>Abrasive Material Handling</i>	<i>Material handling and transfer</i>	<i>Household (Ceiling fans, vents, gutters, attic, crown molding, hard-to-reach places)</i>	<i>Hair Salon &amp; Pet Grooming</i>
<i>Boat Industry</i>	<i>Conduit</i>	<i>Fume Extraction</i>	<i>Air Duct Cleaning</i>
<i>Chimney Cleaning</i>	<i>Aquarium Cleaning</i>	<i>Robotic Applications</i>	<i>Sewer &amp; Drain</i>
<i>Dental Industries</i>	<i>Toy Industries</i>	<i>Food preparation</i>	<i>Medical Industries</i>





# Accessories

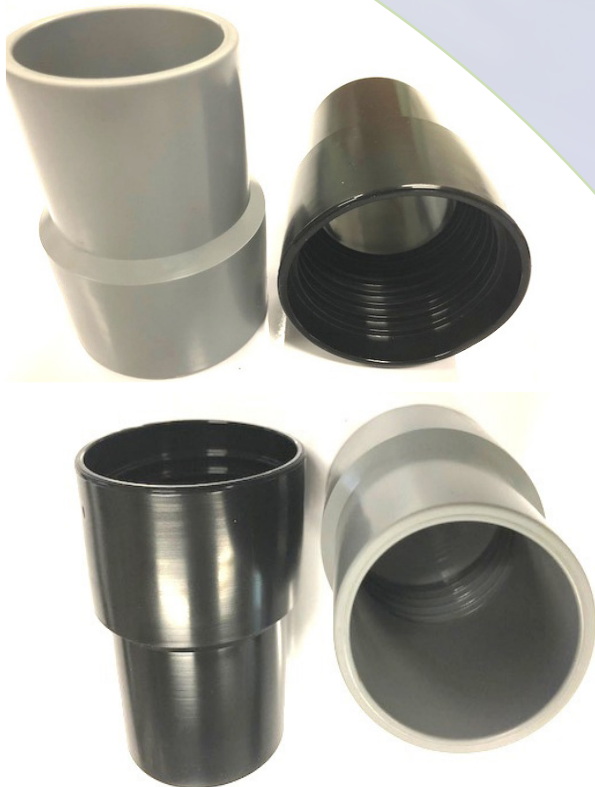


PART #	DESCRIPTION
<b>0625V-GY</b>	5/8" Vinyl Thread to 5/8" Tool - Gray



PART #	DESCRIPTION
<b>0750V-GY</b>	3/4" Vinyl Thread to 3/4" Tool - Gray

PART #	DESCRIPTION
<b>100V-GY</b>	1" Vinyl Thread to 1" Tool - Gray



PART #	DESCRIPTION
<b>125V-GY</b>	1 1/4" Vinyl Thread to 1 1/4" Tool - Gray <i>Also comes in white (WT) and black (BK)</i>

PART #	DESCRIPTION
<b>150V-GY</b>	1 1/2" Vinyl Thread to 1 1/2" Tool - Gray <i>Also comes in white (WT) and black (BK)</i>

PART #	DESCRIPTION
<b>200V-GY</b>	2" Vinyl Thread to 2" Tool - Gray <i>Also comes in white (WT) and black (BK)</i>



PART #	DESCRIPTION
<b>300V-BK</b>	3" Vinyl Thread to 3" Tool - Black <i>These cuffs are only for Eclipse Tiger Tail or Pro-Clipse hoses</i>

PART #	DESCRIPTION
<b>125SW-GY</b>	1 1/4" Swivel Thread to 1 1/4" Tool - Gray <i>Also comes in white (WT) and black (BK)</i>

PART #	DESCRIPTION
<b>150SW-GY</b>	1 1/2" Swivel Thread to 1 1/2" Tool - Gray <i>Also comes in white (WT) and black (BK)</i>

PART #	DESCRIPTION
<b>200SW-GY</b>	2" Swivel Thread to 2" Tool - Gray



Amflex proudly sells to distributors, OEM's, wholesalers & retailers.

**10% Discount on your FIRST cuff order and no min order!**

**Min Orders:** \$75.00 for cuffs only.  
\$15.00 processing fee for cuff orders less than \$75.00

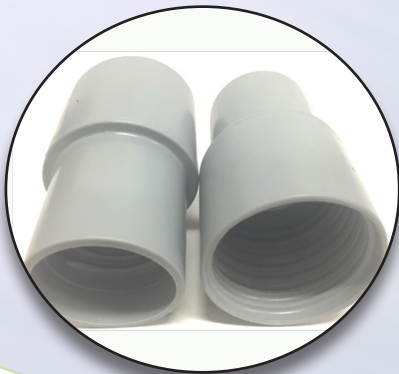


# Connectors

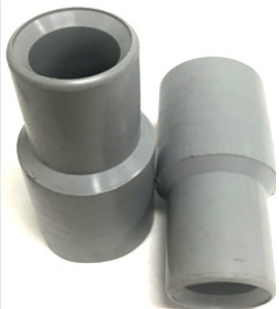


PART #	DESCRIPTION
<b>150-150VC-GY</b>	1 1/2" Vinyl <b>Double Threaded</b> Connector - Gray

PART #	DESCRIPTION
<b>200-200VC-GY</b>	2" Vinyl <b>Double Threaded</b> Connector - Gray



PART #	DESCRIPTION
<b>200-150VC-GY</b>	2" to 1 1/2" Vinyl Double Threaded Connector - Gray



PART #	DESCRIPTION
<b>125-100VR-GY</b>	1 1/4" Vinyl Thread to 1" <b>Reducer</b> Tool - Gray *** Limited Stock ***

PART #	DESCRIPTION
<b>200-150VR-GY</b>	2" Vinyl Thread to 1 1/2" <b>Reducer</b> Tool - Gray



PART #	DESCRIPTION
<b>200SWR-GY</b>	2" Swivel Thread to 1 1/2" <b>Reducer</b> Tool - Gray



# Enlargers



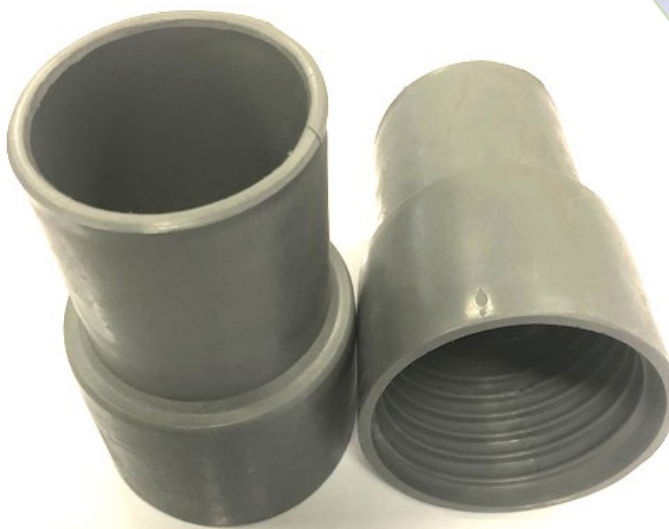
PART #	DESCRIPTION
<b>100-150VI-GY</b>	1" Vinyl Thread to 1 1/2" <b>Enlarger</b> Tool - Gray <i>Also comes black (BK)</i>

PART #	DESCRIPTION
<b>100-125VI-GY</b>	1" Vinyl Thread to 1 1/4" <b>Enlarger</b> Tool - Gray <i>Also comes black (BK)</i>

PART #	DESCRIPTION
<b>125-150VI-GY</b>	1 1/4" Vinyl Thread to 1 1/2" <b>Enlarger</b> Tool - Gray <i>Also comes black (BK)</i>

PART #	DESCRIPTION
<b>150-175VI-GY</b>	1 1/2" Vinyl Thread to 1 3/4" <b>Enlarger</b> Tool - Gray

PART #	DESCRIPTION
<b>150-200VI-GY</b>	1 1/2" Vinyl Thread to 2" <b>Enlarger</b> Tool - Gray



PART #	DESCRIPTION
<b>250ET-GY</b>	2 1/2" EVA Thread to 2 1/2" Tool - Gray



# Special Accessories


PART #	DESCRIPTION
<b>125-225VXI-BK</b>	1 1/4" to 2 1/2" Nozzle <b>Enlarger</b> - Black


PART #	DESCRIPTION
<b>125VXN-BK</b>	1 1/4" Nozzle - Black




PART #	DESCRIPTION
<b>150-225CWI-BK</b>	1 1/2" Thread - 2 1/4" Slip <b>Enlarger</b> - Black



PART #	DESCRIPTION
<b>075-100CS-BK</b> 	1" - 3/4" Double Threaded swivel <b>Reducer</b> Connector assembly - Black

PART #	DESCRIPTION
<b>075-075CS-BK</b> 	3/4" - 3/4" <b>Double Threaded</b> Connector swivel assembly - Black



PART #	DESCRIPTION
<b>100-100CS-BK</b> 	1" - 1" <b>Double Threaded</b> Connector swivel assembly - Black

# Hose Related

## *Properties*

**MINIMUM BEND RADIUS:** Is the minimum radius you can bend a hose before it collapses, measured from the center point to the inside edge.

**VACUUM RATING:** Vacuum, or negative pressure, is measured in inches of mercury (Hg). Full vacuum is 28" to 29.9" Hg. When the temperature increases, the hose vacuum rating degrades.

**PRESSURE RATING:** Equal to 50% of the burst pressure.

**TEMPERATURE RANGE:** Working temperature range is the parameter before hose diminish its properties and performance.

**AIR FLOW:** The amount of air a hose is capable to transfer, measured in cubic feet per minute (cfm). There are many variables to consider when measuring air flow through a hose listed as follow: Hose length, diameter, friction factor, friction lost, absolute pressure, absolute temperature, absolute air viscosity.

**CHEMICAL RESISTANT:** Is the change in properties (Change in weight is the most common) due to contact with one or a combination of several chemicals use in the cleaning industry or chemicals in the material being transferred. High temperature will magnify the negative effect from chemicals.

**STATIC DISSIPATIVE :** Is the capacity to minimize an electric build-up while transferring dust or any abrasive material through a hose. A compound is added to the formulation which will bloom to the surface to capture moisture from the environment and use its conductive property to dissipate the static buildup. (anti-static compound is added to the hose blend).  $10^9$  resistivity.

**STATIC CONDUCTIVE:** Is the capacity to bleed all electric build-up while transferring dust or any abrasive material through a hose. This type of material used to manufacture hoses has a similar property as a ground wire. It is also possible to measure a surface resistivity level in Ohms/Square. To be used in area workplace where there is a possibility of combustion because of environmental reasons.  $10^4$  resistivity.

\*\*\*\*\*

**California Proposition 65** (Safe Drinking Water and Toxic Enforcement Act of 1986): list of the California State relating to chemicals known to the state to cause cancer or reproductive toxicity (updated January 2017): this product does not intentionally incorporate any of the chemicals regulated in quantities above the applicable limits.

**RoHS COMPLIANCE:** Amflex certifies that the raw materials used in the hose extrusion process does not contain any restricted substance listed by the RoHS Directive, such as: Lead, Mercury, Cadmium, Hexavalent chromium, Polybrominated biphenyl, Polybrominated diphenyl ether.